

C2 Research Practice Partnership (CUEL and CPS)

Positively Contribute to CPS 5-Year Equity-Focused Vision and Generate Knowledge of Value to the Field

C2 HYBRID RPP

SYSTEM, NETWORK, SCHOOLS

OUTCOMES

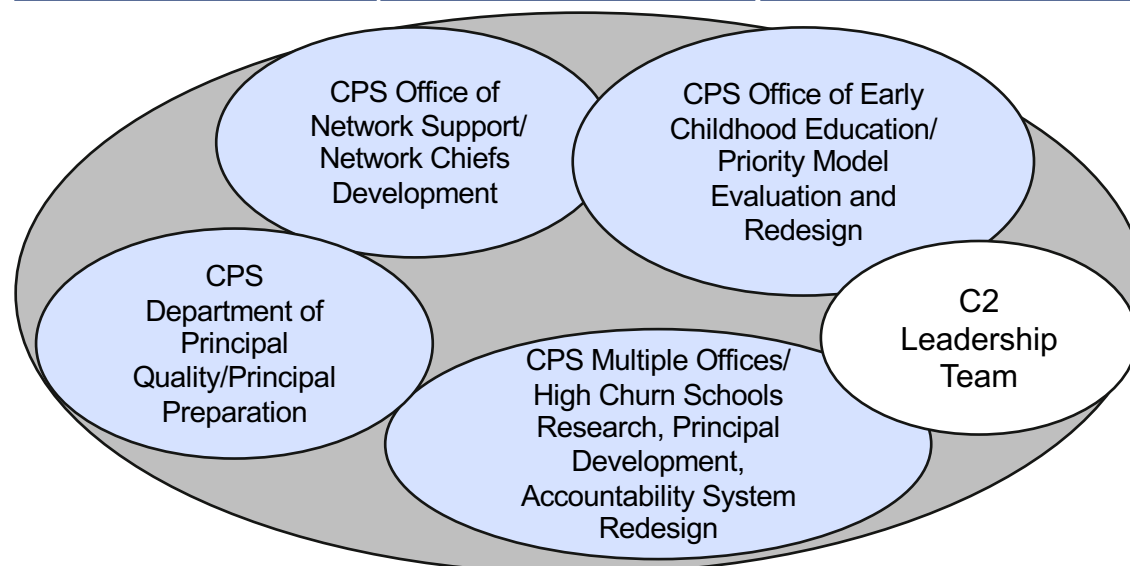
This Partnership will:

- Jointly identify pressing problems within CPS where knowledge generation and evidence-based action would strengthen the system, networks, schools; particularly for equity-oriented aims
- Use a hybrid of RPP approaches (e.g., qualitative, quantitative, randomized control trials, networked improvement communities, design-based research) to support knowledge generation and evidence-based actions; particular for equity-oriented aims

Strengthen System Level Policies and Practices to Provide Stronger Supports for Equitable Student Learning

Strengthen Network Level (Network Chief, Deputy others) Policies and Practices to Provide Stronger Supports for Equitable Student Learning

Strengthen School Level (Principal, Assistant Principal, Teacher Leader and Leadership Team) Policies and Practices to Provide Stronger Supports for Equitable Student Learning



INSTRUCTION

High Quality Rigorous and Equity-Oriented Instruction as evidenced in the CPS Instructional Core Vision

ACADEMIC PROGRESS

Improvement to Equitable Student Learning Outcomes and Meeting Whole Child Needs

We will leverage our RPP to jointly identify and use a hybrid of RPP approaches to address educational problems impacting issues of educational equity in Chicago Public Schools (CPS).